



EVER LAND

AT THE HEART OF NATURE

**LIFTING THE COVER: Climate and Deforestation
Strategies with Enduring Impacts**

Presented by Philip Rothrock, Business Development

BCP EVENT ATTENDEES: WHO ARE WE?



CHECK-IN



Who here has deforestation-free and climate targets that cover Scopes 1, 2 & 3 emissions?



3 MAIN POINTS

1. **Set ambitious goals** - align climate and deforestation targets and seize **opportunities to address both simultaneously**
2. **Show your work** - rely on real **evidence of high-quality impacts** for all interventions
3. **Find quick wins** - demonstrate immediate progress and find stop gap measures for known roadblocks

SET AMBITIOUS GOALS

HIGH LEVEL AMBITION: THE SCIENCE

DEFORESTATION

If deforestation were a country, it would be the **world's third largest emitter**¹, generating over five times more than global aviation.

5Gt

of CO₂ avg. per year²

AVIATION

900Mt

of CO₂ avg.
per year³

1. UNFCC 2020
2. IPCC 2019
3. IATA



THE CHALLENGE



We cannot limit global temperature rise to $\leq 1.5^{\circ}\text{C}$ without ending deforestation by 2030¹.

Natural forests harbour **80% of terrestrial biodiversity and store more than a trillion tonnes of carbon²,**

with **1.6 billion people depending on forests** for subsistence and income³ and **75% of Earth's freshwater** provided by forested watersheds⁴.

However, land use change currently accounts for **22% of annual GHG emissions,** half of which is from deforestation⁵

Causing **one-quarter of the world's animal species** to potentially face **extinction⁶** and endangering **US\$2.7 trillion worth of ecosystem services⁷**

1. IPCC, 2023

2. IUCN, 2021

3. Newton *et al.*, 2020

4. FAO, 2019

5. IPCC, 2023

6. IPBES, 2019

7. Johnson *et al.*, 2021



THE OPPORTUNITY

Between 2010 and 2019, terrestrial ecosystems absorbed **one third of all anthropogenic CO₂ emissions.**¹

Within the land use sector, reducing deforestation in tropical regions has the **highest mitigation potential** for achieving Paris Agreement targets².

Protection-related nature-based climate solutions (NbcS) can deliver immediate climate, community and biodiversity benefits and are **6X more cost-effective than restoration.**³

Protecting tropical forests will safeguard 55% of all aboveground carbon in forests.⁴

1. IPCCa, 2023 3. Cook-Patton *et al.*, 2021

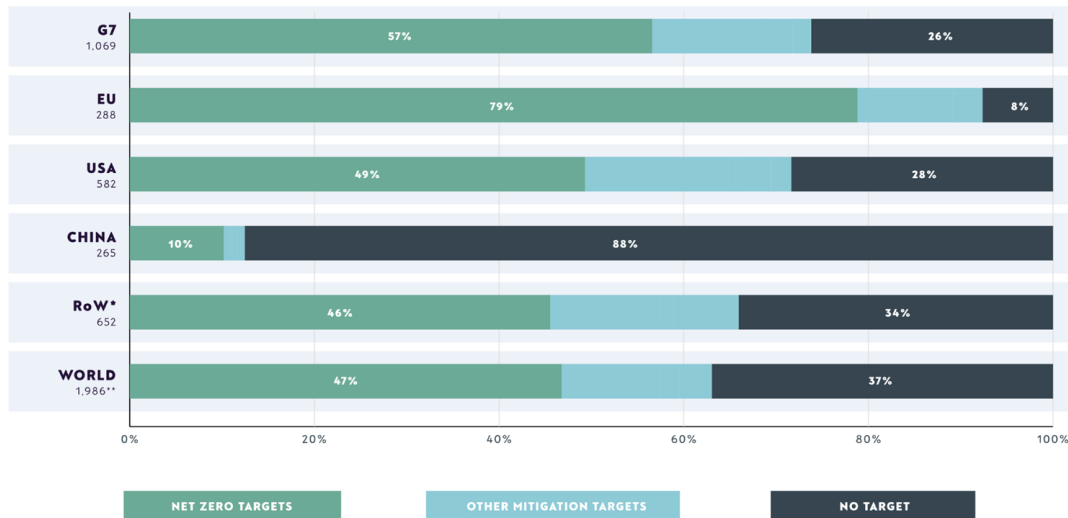
2. IPCC, 2023 4. Mills *et al.*, 2023



GLOBAL AMBITIONS

COMPANIES: END MITIGATION TARGETS

Covering the world's largest 2,000 companies by annual revenue. Percentages by number.



Key Target Setting Standards



SCIENCE
BASED
TARGETS



Accountability
Framework
Initiative

VCMI

Voluntary Carbon
Markets Integrity
Initiative

CLIMATE REGULATIONS



	California Disclosure Laws (SB253, SB261)	US SEC Climate Rule	EU Corporate Sustainability Reporting Directive (CSRD)
Firms Covered	Public & private companies (including LLCs and partnerships) organized	SEC registrants (mostly companies with U.S. public equity listings, including foreign private issuers)	1) Firms listed on EU-regulated markets; 2) large EU firms, both listed & unlisted, incl large subsidiaries of non-EU firms; 3) SME's listed in the EU; 4) non-EU parent firms with more than 150 million in annual EU revenue
# Firms	SB 261: >\$500M revenue (~10,000 firms) SB 253: >\$1B revenue (~5,000)	No \$ threshold just registrants: (~8,000 firms)	EU firms: ~50,000 Non-EU firms (1/3 of which in US): (~10,000)
Climate Risk info	SB 261: Biennial preparation and publication of a TCFD-aligned risk report	Climate-related risks, mostly through lens of traditional financial materiality	Unique double materiality threshold (material impact on firm and firm's material impact on stakeholders)
Scope 1&2	SB 253: Annual Scope 1-3 Emissions data required regardless of materiality determination	Scope 1-2 emissions; Scope 3 if material or if the firm has set a target	Scope 1&2 emissions and Scope 3 if not material requires explanation
Beyond Climate	Just carbon	Just carbon	Broad range of sustainability topics—environmental, social and governance.

DEFORESTATION REGULATION



European Union Deforestation Regulation (EUDR) Highlights

- ✓ Traders & operators placing products in or exported from the EU market must apply due diligence to prove deforestation-free and **provide due diligence statement**
- ✓ Cut-off date of **no deforestation later than Dec 2020**
- ✓ Timber products previously covered by EU Timber Regulation must comply with EUDR instead by 2027
- ✓ Less monitoring information required for commodities coming from jurisdictions designated as “Low Risk”
- ✓ **Civil society can lodge non-compliance claims**, which authorities can investigate



CHECK-IN



**Who here feels ready to comply with the EU CSRD
and EUDR?**



SHOW YOUR WORK

GROWING SCRUTINY

EVER
LAND

An assessment of 90 major tropical timber and pulp found **few companies monitoring for deforestation** in their operations and even fewer monitoring their suppliers' operations as of August 2023 (see figure to right).

Sources of scrutiny

- Media and watchdog reports
- Shareholder campaigns
- Certification bodies and environmental coalitions
- Governmental regulatory bodies

**ONLY
9% OF
COMPANIES
(9/100)**



**ASSESSED ON SPOTT
PROVIDE EVIDENCE
OF MONITORING FOR
DEFORESTATION IN
THEIR OPERATIONS**

EARLY MOVER ADVANTAGE

EVER
LAND

Areas of Leadership

- 1. Management Systems** – secure lateral & vertical buy-in for climate & deforestation targets, policies, & disclosures
- 2. Aligned Targets & Disclosures** – align targets with guidance & inventory data according to key disclosure frameworks
- 3. Supplier Engagement** – streamline emissions & supply data requests, incentives for supplier target setting, supplier & smallholder support programs (e.g. land tenure & mapping)
- 4. High Quality Monitoring Approach** – expert analysis & data (satellite imagery & field visits), alert systems
- 5. Interventions Prioritized for Impact** –
 - A) Individual* - non-compliance policies, improvement plans, & grievance mechanisms
 - B) Collective* - jurisdictional programs targeting sustainable production, traceability, and conservation

Key Disclosure Frameworks



Taskforce on Nature-related
Financial Disclosures



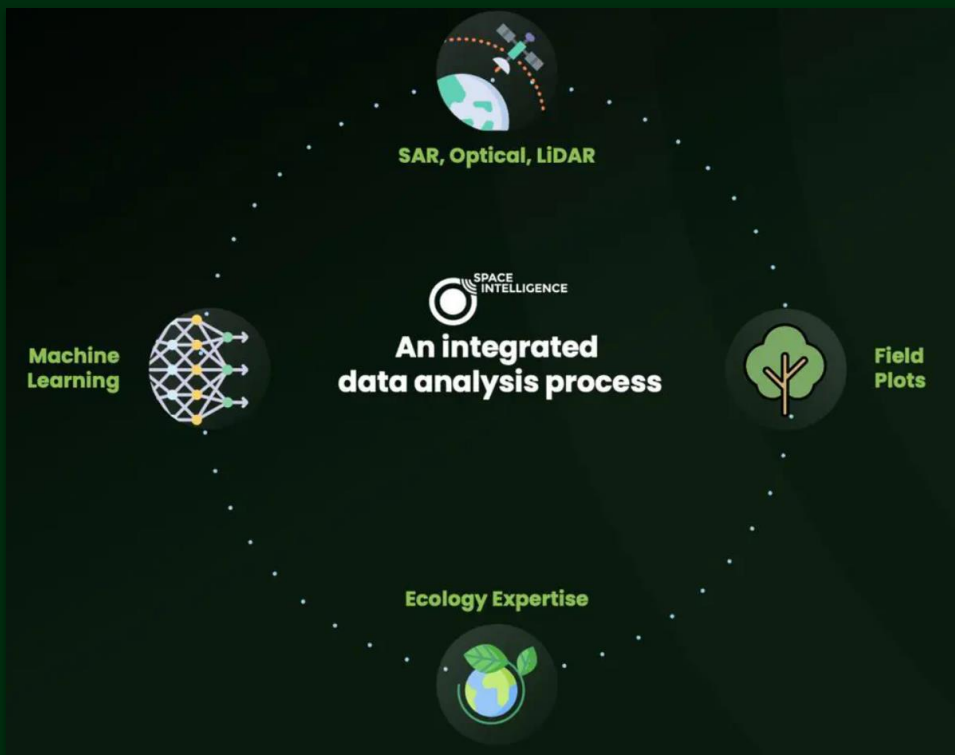
GREENHOUSE
GAS PROTOCOL



HIGH QUALITY MONITORING APPROACH

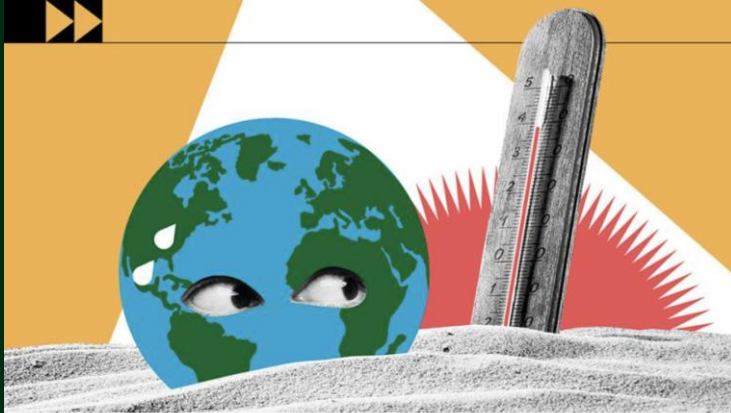
Companies need high value **field data**, **satellite imagery**, and **expert analysis** in which to make decisions and to report real forest impacts and progress. Ensure your approach provides real evidence of impact. Example providers and approaches:

Example Service Providers



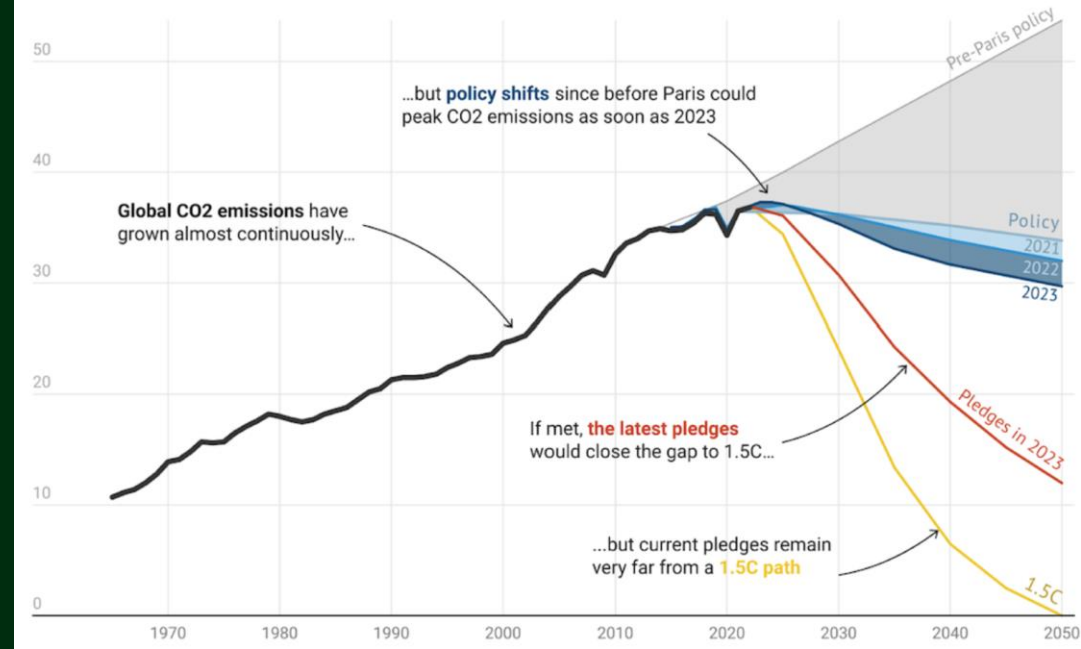
THE SCIENCE WAITS FOR NO ONE

EVER
LAND



THE WINDOW OF OPPORTUNITY IS RAPIDLY CLOSING

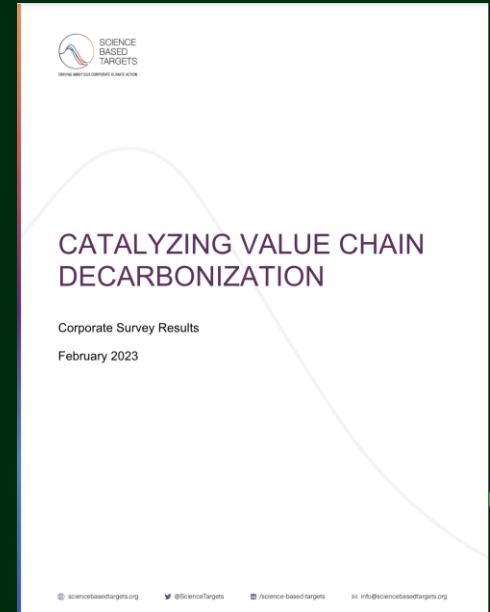
Global Stocktake reports highlight urgent need for accelerated action to reach climate goals



EASIER SAID THAN DONE

Recent survey of 230 companies implementing Science-based Targets found that 90% **most firms struggled with setting Scope 3 targets** and found that these were the three main challenges for target delivery:

- The difficulty in influencing upstream suppliers
- The lack of access to primary data to track progress
- The cost of implementation



INTERVENTIONS PRIORITIZED FOR IMPACT



Supply Chain Management Strategies

- Simplify supply chains & strengthen existing supplier relationships
- Assess risk for multi-year supply shed
- Collective industry supply chain initiatives

Strategies for Delivering Immediate Forests Impacts

- Supply chain partnerships with producers focused on on-the-ground impacts
- Support for jurisdictional production landscapes
- Investments in large-scale conservation programs in sourcing regions

CHECK-IN



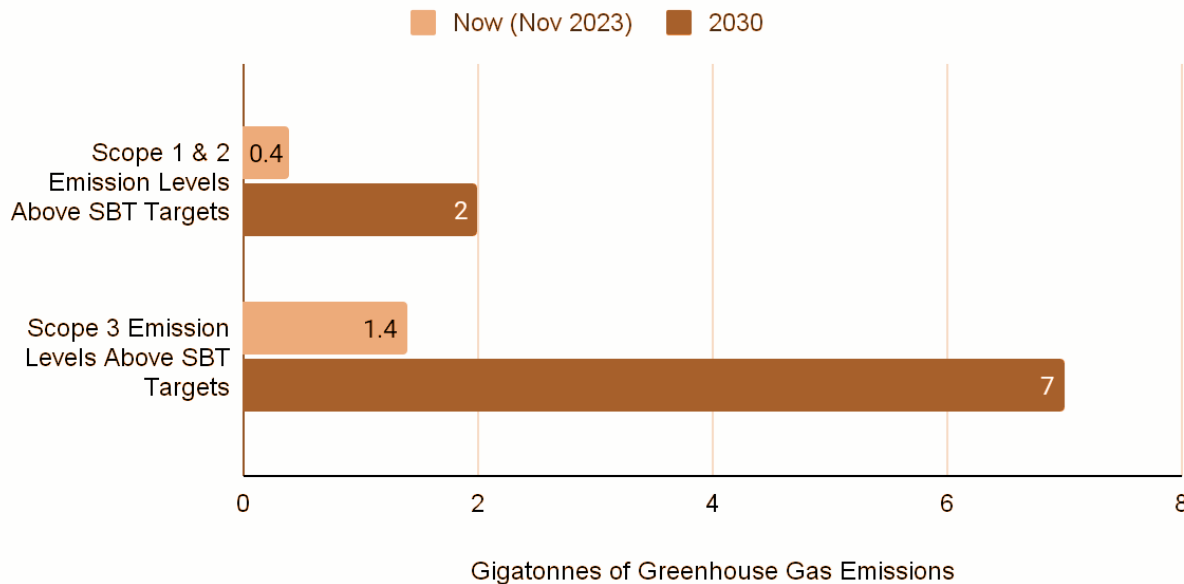
Who here is on track to hit your climate targets? *Do you know how many tonnes short you will be?*



OFFSETTING OPPORTUNITY

MIND THE GAP

Corporate Emissions are Exceeding their Science Based Targets (SBT) by Gigatonnes

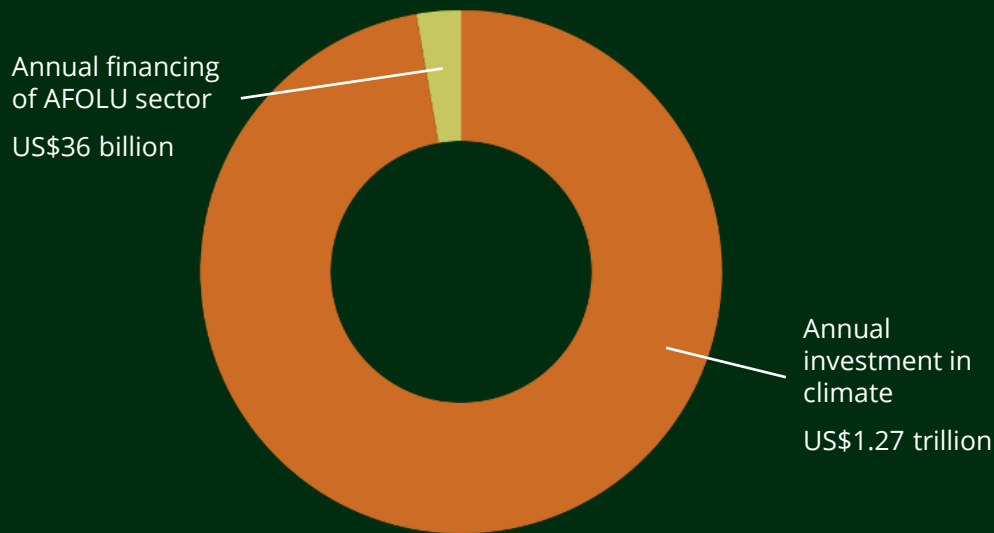


THE OPPORTUNITY

Voluntary Carbon Markets are a transformational funding solution to scale Nature-based climate solutions as a critical mitigation intervention.

But despite the opportunity, current financing of land-based options represents only **2.8%** of the climate mitigation funding.¹

To meet global climate, biodiversity, and land degradation goals, financial investment in the agriculture, land use and forestry (AFOLU) sector must increase **10 – 31X** by 2030.²



The AFOLU sector remains largely underfunded despite strong mitigation potential

1. Buchner *et al.*, 2023

2. IPCCb, 2023

THE MARKET-BASED MECHANISM: REDD+

REDD+ is the fastest, most effective solution to scale durable financial incentives for forest communities and governments to reduce deforestation.

REDD+ is one of the highest-impact actions a company can take in fighting climate change.

REDD+ is not a license to pollute: Companies engaging in the voluntary carbon market are decarbonizing twice as fast as non-buyers¹, and voluntary carbon buyers are **3.4X** more likely to have ambitious, science-based targets to address climate change²

1. Trove Research, 2023

2. Ecosystem Marketplace, 2023

Image: ©Everland/Filip Agoo

The Everland logo consists of the word "EVER" stacked above the word "LAND" in a white, sans-serif font. The logo is positioned in the top right corner of the slide, partially overlapping a green triangular graphic element that points downwards.

THE KEY: TO SAVE FORESTS, WE NEED TO CHANGE THE ECONOMICS

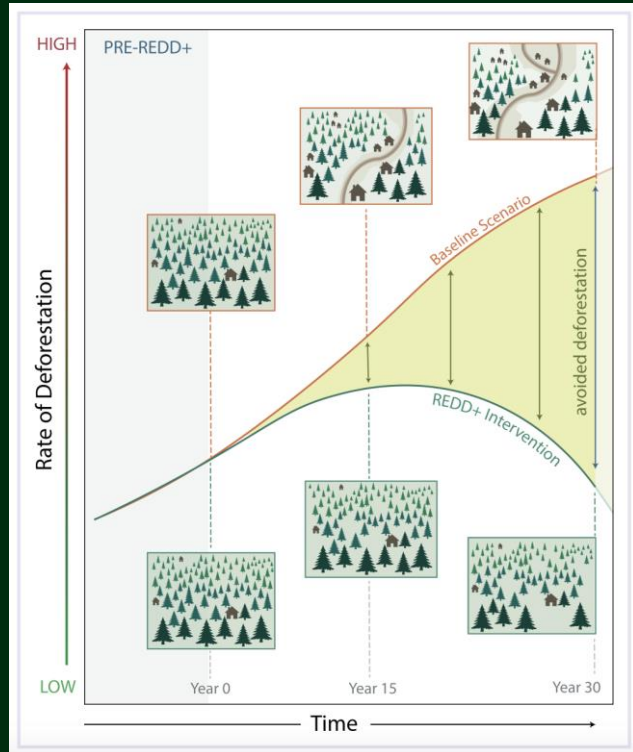


Forest loss is driven by economics – people trying to feed their families and achieve prosperity, governments trying to develop their economies and create jobs.

To halt deforestation, the choice for **conservation must deliver compelling value to the stakeholders who have a say in the fate of the forest.**

Otherwise, forests will be worth more when they are cut down than conserved and they will continue to be destroyed.

WHAT IS REDD+ & HOW DOES IT WORK?

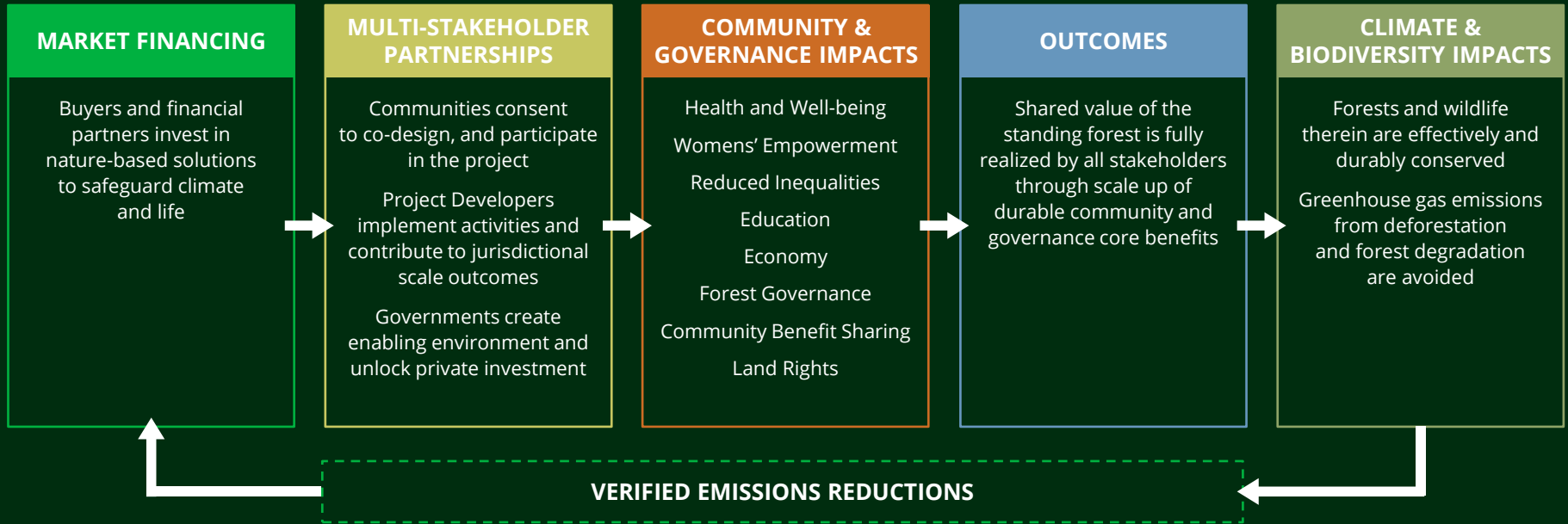


Reduce Emissions from Deforestation and forest Degradation + support additional forest activities (REDD+)

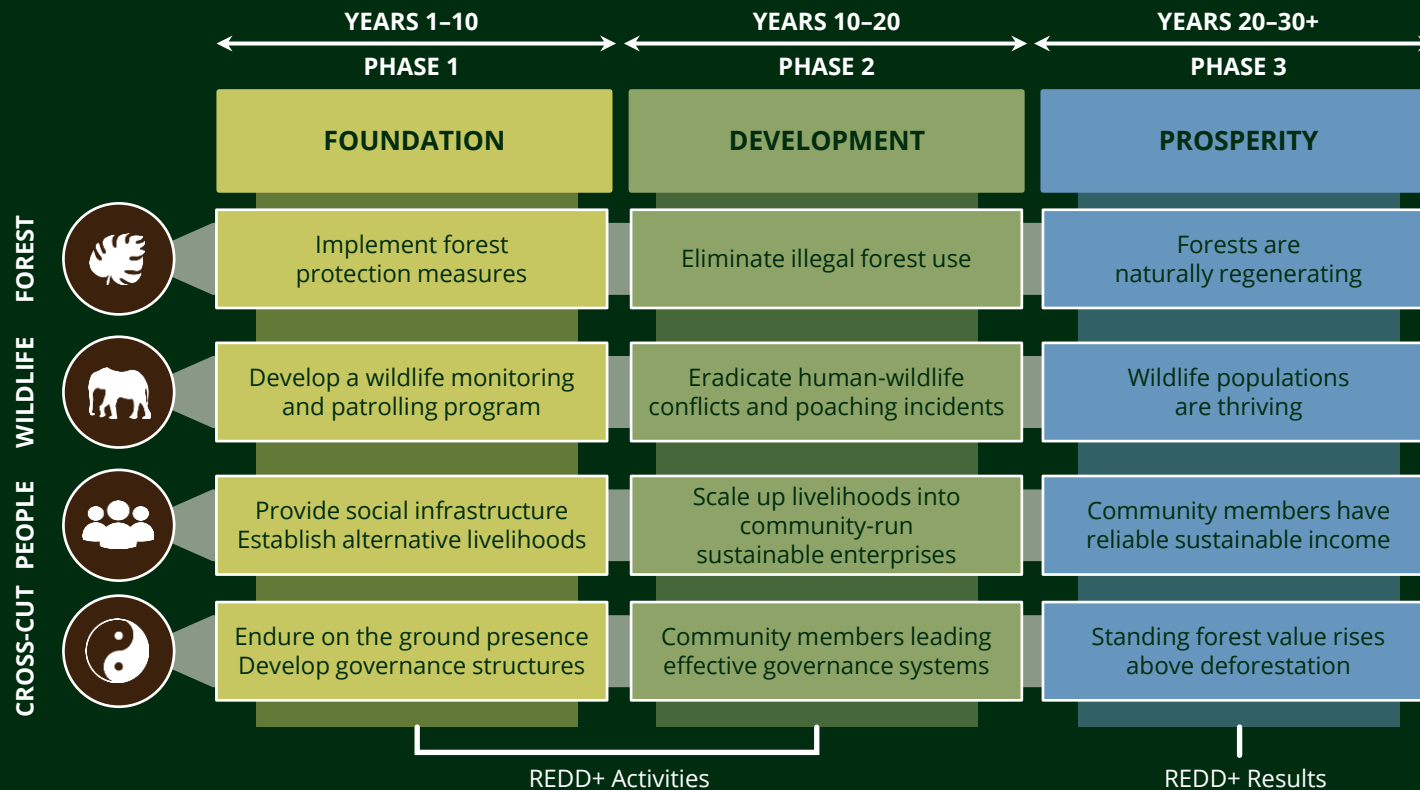
REDD+ projects fight deforestation through:

1. Monitoring and patrol high risk forests
2. Disruption of deforestation activities
3. Education of communities on importance of conservation
4. Provision of public services voted on by community
5. Alternative sustainable livelihood development

REDD+ THEORY OF CHANGE



REDD+ ARC OF TRANSFORMATION



GET AHEAD OF THE CURVE



Carbon prices are increasing:

- Increases in # of firms setting internal carbon pricing,
- Increases in # of environmental regulations and improved clarity around their enforcement, and
- Surge in demand among firms struggling to hit their net zero targets before popular 2030 deadline.

Avoided deforestation has the highest mitigation potential of any NbcS and is **6X more cost-effective than restoration**.³ REDD+ is better for biodiversity and offers more ecosystem service benefits that took hundreds of years to grow.



EVERLAND'S MISSION

Everland exists to help people prosper from conserving their forests and wildlife, resulting in climate change mitigation for the benefit of all.

We mobilize transformative investments into forest communities who are on the frontlines stopping deforestation, halting climate change, and safeguarding biodiversity, in order to deliver conservation outcomes at scale.

EVER
LAND



OUR SERVICES

COMMERCIAL STRATEGY & EXECUTION

Facilitation of sales contracts and shared value creation between clients and the projects they are buying carbon credits from.

Everland is the largest primary seller of voluntary carbon credits in the world and sold over 80mt of REDD+ offsets between 2021-22, over 37% of all the REDD+ credits issued. Everland has deep expertise in carbon finance, working closely with projects to design a funding approach that meets their needs, be it early-stage investment, expansion capital or long-term purchase agreements.





TRUSTED PROJECT PARTNERSHIPS

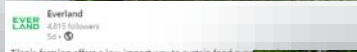
Durable partnerships with project developers and projects **based on trust, mutual understanding, and a shared vision** to facilitate initial relationship building, project onboarding, **due diligence**, and marketing support for the whole project life cycle.

Allowing us unique access and the ability to respond quickly to client needs.

PROJECT DUE DILIGENCE

Rigorous project due diligence to:

- **Identify high integrity REDD+ projects** that deliver real, measurable, additional, and durable emission reductions while delivering significant community and wildlife conservation impact.
- **Guide all projects Everland supports to continuously go beyond industry standards.**
- **Enable the smooth transfer of insights from projects to market** allowing buyers to fully understand the complexities of REDD+ projects and have more confidence in their investments.

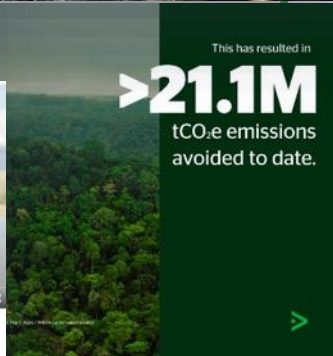


Tilapia farming offers a low-impact way to sustain food supply and generate potential income in the Mai Ndombe region. Tilapia can be raised with minimal inputs - safeguarding local biodiversity while providing a protein source for local communities.

Democratic Republic of the Congo

Mai Ndombe REDD+ Project

Fish Farms provide a high protein food source while conserving the biodiversity of Lake Mai Ndombe



PROJECT STORYTELLING

Including on-the-ground collaboration and stakeholder engagement, **illuminating the connection between people, biodiversity and the value of the forests** through ethical photography, film, events and social media. We can also co-produce high-quality content with clients for bespoke requirements.



KEO SEIMA

REDD+ PROJECT CAMBODIA

Meet Yorn Sordet, An Indigenous Bunong Leader Empowering Women Through Conservation.



"I got to work with elders who appreciated our work...We get to go on forest patrols with men, and even guide them. And when we ask them to do a task they do it...They don't care that we are woman. Essentially, they see us as equals."

Yorn Sordet ©Everland/Filip C. Agoo

*Species categorized as Critically Endangered, Endangered, Vulnerable and Near Threatened on the IUCN Red List



Project Area: 166,983ha

Population reached by the project: >12,000

Project Benefits To Date

20.6 Million tonnes of verified CO2 emissions avoided to date under VCS & CCB Gold.

103 species of global conservation significance* under improved protections

596 people employed by the project, incl. **68 women**

Over **2,200** people reached with clean water initiatives

3,052 people benefiting from 7 indigenous Community Land Titles (ICTs)



CONCLUSION

1. **Set ambitious goals** - establish integrated long- and short-term targets **making sure to report continual progress**
2. **Show your work** - make sure your data is fit for purpose with the ability to provide **evidence of high-quality impacts**
3. **Find quick wins** - prepare for known traceability and reporting roadblocks by considering collaborative workarounds
4. **REDD+ is high quality solution** that can **cover for climate and deforestation performance gaps** given known chokepoints.

OUR PARTNERS

Everland represents a portfolio of best-in-class, verified REDD+ projects and a robust pipeline of new projects managed by the world's preeminent REDD+ Project Developers that are NGOs, conservation companies, and host country conservation agencies. Including:

**WILDLIFE
ALLIANCE**



**WILDLIFE
WORKS** 



 **Wildlife
Conservation
Society**



An aerial photograph of a herd of elephants moving through a dense, green savanna. The elephants are in various stages of their walk, with some leading and others following. The vegetation is thick and vibrant green, with some taller trees scattered throughout. The lighting suggests a bright, sunny day.

**THANK
YOU**

FOR MORE INFORMATION EMAIL – PHILIP.ROTHROCK@EVERLAND.EARTH

Image: ©Everland/Filip C Agoo

**EVER
LAND**

REFERENCES

Slide 6

1. UNFCCC 2020 - <https://www.unep.org/explore-topics/climate-action/what-we-do/redd>
2. Intergovernmental Panel On Climate Change (ipcc) (2019) - p8 - <https://www.ipcc.ch/site/assets/uploads/2019/11/SRCCL-Full-Report-Compiled-191128.pdf>
3. IATA (2019) - <https://www.iata.org/en/iata-repository/pressroom/fact-sheets/fact-sheet---iata-net-zero-resolution/>

Slide 7

1. Climate Change 2023: Synthesis Report. Contribution of Working Groups I, II and III to the Sixth Assessment Report of the Intergovernmental Panel on Climate Change [Core Writing Team, H. Lee and J. Romero (eds.)]. IPCC, Geneva, Switzerland, pp. 35-115, doi: 10.59327/IPCC/AR6-9789291691647
2. Forests and climate change. (2021, February). [Resource]. <https://iucn.org/resources/issues-brief/forests-and-climate-change>
3. Newton, P., Kinzer, A. T., Miller, D. C., Oldekop, J. A., & Agrawal, A. (2020). The Number and Spatial Distribution of Forest-Proximate People Globally. *One Earth*, 3(3), 363–370. <https://doi.org/10.1016/j.oneear.2020.08.016>
4. FAO. (2019). Forests: Nature-based solutions for water (978-92-5-131910-9). FAO. <https://doi.org/10.4060/CA6842EN>
5. See 1
6. IPBES (2019): Global assessment report on biodiversity and ecosystem services of the Intergovernmental Science-Policy Platform on Biodiversity and Ecosystem Services. E. S. Brondizio, J. Settele, S. Díaz, and H. T. Ngo (editors). IPBES secretariat, Bonn, Germany. 1148 pages. <https://doi.org/10.5281/zenodo.3831673>
7. Johnson, J. A., Ruta, G., Baldos, U., Cervigni, R., Chonabayashi, S., Corong, E., Gavryliuk, O., Gerber, J., Hertel, T., & Nootenboom, C. (2021). The Economic Case for Nature: A Global Earth-Economy Model to Assess Development Policy Pathways. World Bank

Slide 8

1. Intergovernmental Panel On Climate Change (ipcc) (Ed.). (2023). Agriculture, Forestry and Other Land Uses (AFOLU). In *Climate Change 2022—Mitigation of Climate Change* (1st ed., pp. 747–860). Cambridge University Press. <https://doi.org/10.1017/9781009157926.009>
2. See above
3. Cook-Patton, S. C., Drever, C. R., Griscom, B. W., Hamrick, K., Hardman, H., Kroeger, T., Pacheco, P., Raghav, S., Stevenson, M., Webb, C., Yeo, S., & Ellis, P. W. (2021). Protect, manage and then restore lands for climate mitigation. *Nature Climate Change*, 11(12), Article 12. <https://doi.org/10.1038/s41558-021-01198-0>
4. Mills, M. B., Malhi, Y., Ewers, R. M., Kho, L. K., Teh, Y. A., Both, S., Burslem, D. F. R. P., Majalap, N., Nilus, R., Huaraca Huasco, W., Cruz, R., Pillco, M. M., Turner, E. C., Reynolds, G., & Riutta, T. (2023). Tropical forests post-logging are a persistent net carbon source to the atmosphere. *Proceedings of the National Academy of Sciences*, 120(3), e2214462120. <https://doi.org/10.1073/pnas.2214462120>

REFERENCES



Slide 10

Bichet, E., Mencher, M., Sasfai, B., & Cooley LLP, (2024). Comparing the SEC Climate Rules to California, EU and ISSB Disclosure Frameworks. Harvard Law School Forum on Corporate Governance. <https://corpgov.law.harvard.edu/2024/04/15/comparing-the-sec-climate-rules-to-california-eu-and-issb-disclosure-frameworks/>

Slide 22

1. MSCI. (2023, November 24). Using Carbon Credits to Meet Corporate Climate Targets. <https://trove-research.com/report/using-carbon-credits-to-meet-corporate-climate-targets>

Slide 23

1. Ceres, (2023). A Guide for Businesses: California's New Climate Disclosure Legislation. https://www.youtube.com/watch?v=Fi-O_IM_tXw
2. Intergovernmental Panel On Climate Change (Ippc) (Ed.). (2023). Investment and Finance. In Climate Change 2022—Mitigation of Climate Change (1st ed., pp. 1547–1640). Cambridge University Press. <https://doi.org/10.1017/9781009157926.017>

Slide 24

1. Trove Research. (2023, June 1). Corporate Emission Performance and the Use of Carbon Credits. https://trove-research.s3.amazonaws.com/pdf/Trove-Research_Corporate-Emissions-and-Carbon-Credits_June-2023-2-1.pdf?X-Amz-Algorithm=AWS4-HMAC-SHA256&X-Amz-Credential=AKIA2XCFEQQPLGFNG6Q%2F20240209%2Feu-west-2%2Fs3%2Faws4_request&X-Amz-Date=20240209T19253
2. Forest Trends' Ecosystem Marketplace. (2023). All In On Climate: The Role of Carbon Credits in Corporate Climate Strategies. Forest Trends' Ecosystem Marketplace. <https://app.hubspot.com/documents/3298623/view/688132803?accessid=5f7206>

Slide 26-28, 47

1. Pauly, M., & Tosteson, J. (2022). Safeguarding natural forests through the voluntary REDD+ scheme. Nature Plants, 8(8), 861–866. <https://doi.org/10.1038/s41477-022-01208-9>

APPENDICES

OUR TRANSFORMATIONAL 2030 TARGETS*



Investment in forest communities



3.5M

People benefitting from new economic opportunities



4.5M

People with improved health and wellbeing



700K

Children with improved access to education



1.5M

Women and girls benefiting from increased support

*Targets were established by adding the expected impact of existing projects with the impact potential of new projects joining Everland's portfolio before 2030.

OUR TRANSFORMATIONAL 2030 TARGETS*



Strengthening governance



\$30M

At least \$300M in carbon revenues distributed annually through direct community benefit sharing mechanisms

Climate mitigation



90M
tons

90 million tons of Verified Emissions Reductions generated annually and 800 million tons cumulatively by 2030

300M
tons

Conserving biodiversity



80%

Area occupied by IP/LCs have formalized, clear and secure land tenure rights

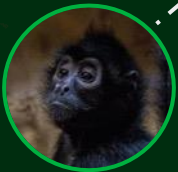
At least 80% of the project portfolio area under land-use or zoning plans that are formally adopted and enforceable

23M
ha

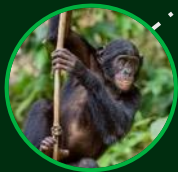
23 million hectares of forest effectively managed for long-term protection of at least 900 IUCN Red List species

*Targets were established by adding the expected impact of existing projects with the impact potential of new projects joining Everland's portfolio before 2030.

OUR VERIFIED REDD+ PROJECT PORTFOLIO



**ACAPA - Bajo Mira
y Frontera**
Colombia



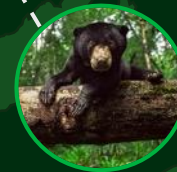
Mai Ndombe
DRC



Kasigau Corridor
Kenya

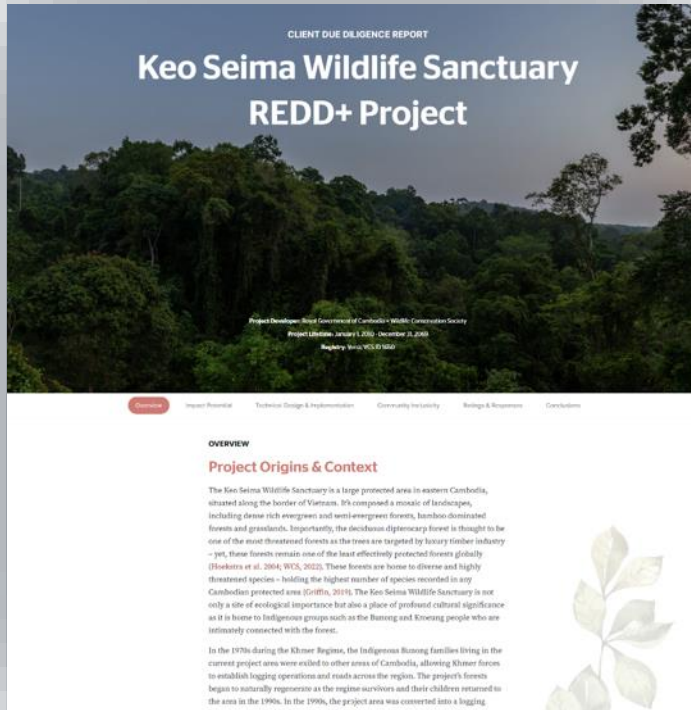


Keo Seima
Cambodia



Southern Cardamom
Cambodia

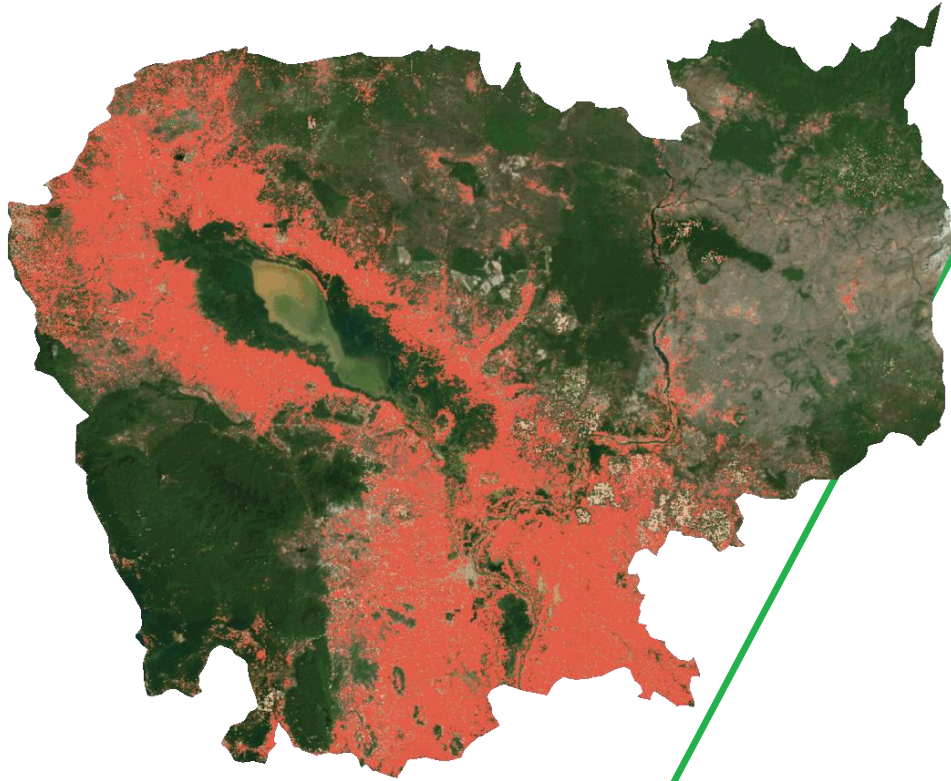




EXCLUSIVE PROJECT REPORTING

Comprehensive science-driven client due diligence reports presenting research, analysis and insights gathered from Everland's Project Due Diligence process. Consistently updated following monitoring & verification cycles, project visits and other relevant project activity changes.

Holistic data-driven client impact reports structured around each project's implementing environment, specific theory of change and host country SDGs, with updates against key results, challenges, adaptive management strategies and emerging opportunities



Between 2010–2020, Cambodia lost a total of 3.3 million hectares of forest, equating to 33.2% of forest cover¹

1. Pauly et al. 2024. A Multi-model assessment of REDD+ baselines in Cambodia.

RESEARCH & INNOVATION

Timely thought leadership on the challenges associated with technical aspects of the REDD+ mechanism. Hosting and participating in webinars, podcasts and press briefings.



www.nature.com/scientificreports

scientific reports

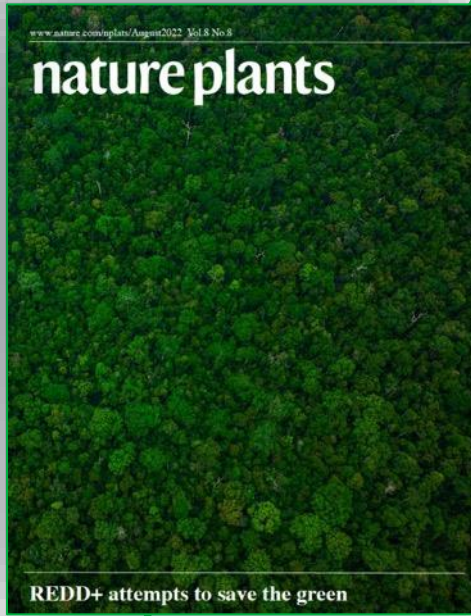
OPEN **High deforestation trajectories in Cambodia slowly transformed through economic land concession restrictions and strategic execution of REDD+ protected areas**

Maren Pauly¹, Will Cross & Joshua Tootson

Protected Areas (PAs) are continuously being established in tropical forests in an effort to preserve biodiversity and reduce deforestation. It was recently demonstrated that PAs are more effective at reducing forest loss than unprotected control sites across southeast Asia. The voluntary REDD+ scheme offers a new framework for the protection of high-deforestation landscapes, jurisdictions, and countries backed by international carbon finance. Here we analyzed the economic drivers of deforestation in Cambodia and the effectiveness of 3 REDD+ projects in adjacent protected areas. We find that Economic Land Concessions were a predominant driver of deforestation in Cambodia and influenced the trajectory of illegal forest conversion in PAs. Furthermore, REDD+ projects offer significantly more protection against deforestation than adjacent PAs in two of the three analyzed cases, likely due to enhanced funding enabling implementation of targeted community activities and rigorous monitoring and enforcement.

www.nature.com/plants/August2022_Vol8No8

nature plants



REDD+ attempts to save the green

RESEARCH & INNOVATION

Leading a cutting-edge science-based research program backed by renowned academic and NGO partners. Publishing findings in high ranking, peer-reviewed journals.

Informing sector-wide learning whilst strengthening the credibility and integrity of the REDD+ mechanism.

Volume 19 | Number 4 | July 2023
ISSN 1531-3717

Integrated Environmental Assessment and Management



WILEY



OUR DUE DILIGENCE PROCESS

**Assesses projects against criteria that encompass REDD+
Technical and Co-Ownership Principles and Practices**

HIGH-QUALITY LOCALLY-CALIBRATED REMOTE SENSING DATASETS

To precisely quantify carbon stock variability, local and regional deforestation risk, baseline and additionality.

REGULAR DUE DILIGENCE FIELD VISITS

To maintain close partnerships with projects, talk to local stakeholders and convey individual project Theories of Change (ToC).

HOLISTIC APPROACH TO QUANTIFYING ADDITIONALITY BEYOND CARBON

Assessing financial, biodiversity, and social benefits of the project.

REGULAR UPDATING OF OUR DUE DILIGENCE FRAMEWORK AND REPORTING

In response to emerging trends, regulatory changes, and market shifts.

- Project Ownership and Carbon Rights
- Financial, Social and Biodiversity Additionality
- Baseline Scenario
- Non-Permanence Risks and Leakage
- Community Agency, and Free Prior & Informed Consent
- Fair, Transparent and Inclusive Revenue Sharing
- Grievance and Redress Mechanism
- Project Action Plan
- Project Monitoring, Evaluation and Learning Plan
- Project Management Capacities and Capabilities
- Worker Social and Economic Well-Being and Protections
- Project Adaptive Management
- Project Performance Reporting