



# TFT – SHARING LESSONS

BOOK CHAIN PROJECT ASIA SUMMIT, 24<sup>TH</sup> APRIL 2018

---

*TRANSFORMING SUPPLY CHAINS FOR PEOPLE &  
NATURE*

---

**WHO IS TFT?**

**TFT是谁?**





# THE FOREST TRUST

The Forest Trust\* (TFT) is a global **non-profit organization** that helps companies understand and transform their product stories with informed decisions about their supply chains

英国森林协会\* (TFT) 是一个全球性的 **非盈利性组织**。我们帮助公司理解并且改革他们的产品故事，通过对他们供应链知情的决议。



- ✓ Founded in 1999 成立于1999
- ✓ Making the **connection** between **business** and **civil society** 建立连接，在商业以及民间团体之间
- ✓ Working **on the ground** (80% of our staff are experts working in the field) 在实地工作(我们80%的人员都是现场工作的专家)
- ✓ Expertise in **environmental** and **social** issues 专业处理环境以及社会问题
- ✓ A **business-minded** non-profit focusing on products and supply chains 拥有商业思维的非营利性组织，关注于产品以及供应链

# SOME OF TFT'S MEMBERS

## TFT的一些会员企业

---



# VTTV: A MODEL FOR INNOVATION

## VTTV: 一个专注创新的模型

VTTV is our model for change. These are the four stages we use when we work with a company, from engagement to verifying progress made.

VTTV 是我们进行改变的模型。这些是我们在与公司合作时的四个阶段，包含了从接触到对所完成进展的核实。

### 价值 (Value)

*Inspire change.* We help companies define their vision and values by coaching them and helping them form their policy commitments.

激励改变。我们帮助公司来定义他们的视野以及价值，通过辅导和帮助他们建立他们的政策承诺。

### 核实 (VERIFICATION)

*Validate change.* We help facilitate monitoring by NGOs and civil society as a source of constant improvement and learning. We also offer companies powerful satellite verification.

核实改变。我们帮助促进来自NGOs和民间团体的监控，并将其作为一个持续进步以及学习的源头。我们也向企业提供有力的卫星核实。

### 透明 (TRANSPARENCY)

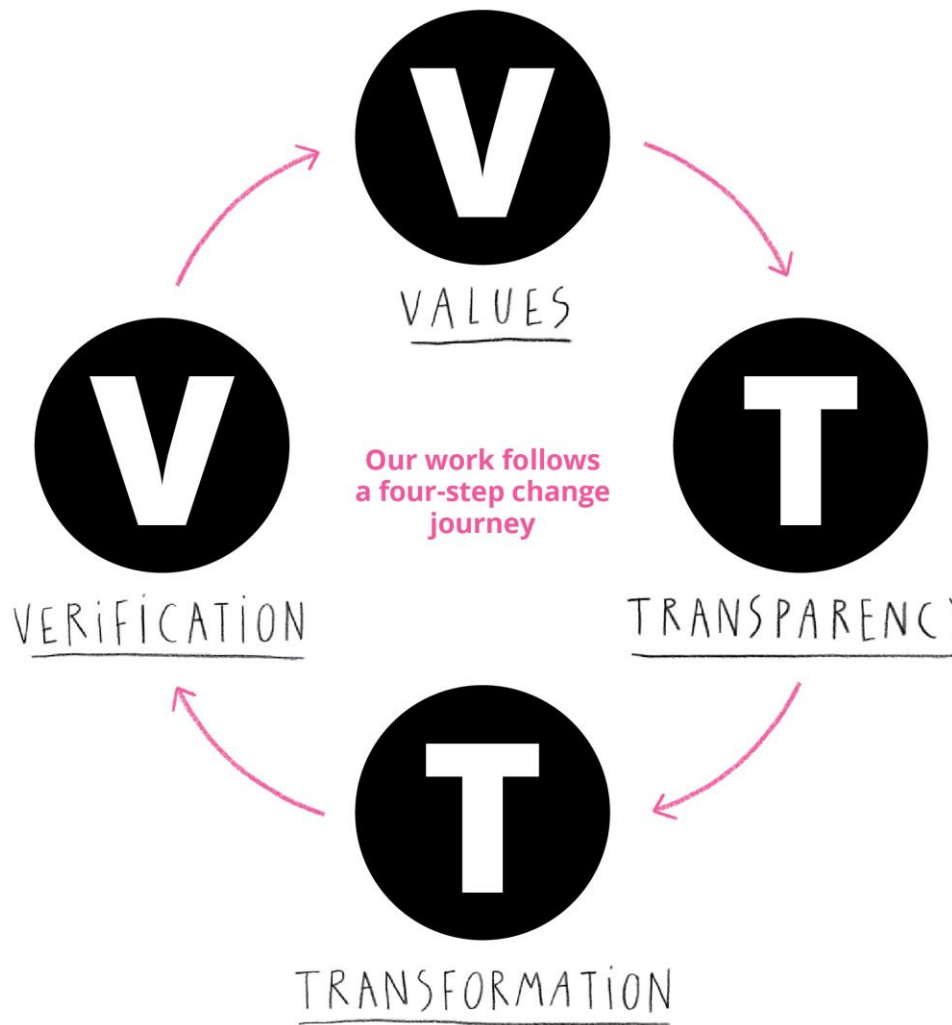
*Inform change.* We provide supply chain mapping and traceability solutions to trace products back to source.

为改变提供信息。我们提供描绘供应链地图以及制定可追溯性方案以追溯产品至它们的源头。

### 改革 (TRANSFORMATION)

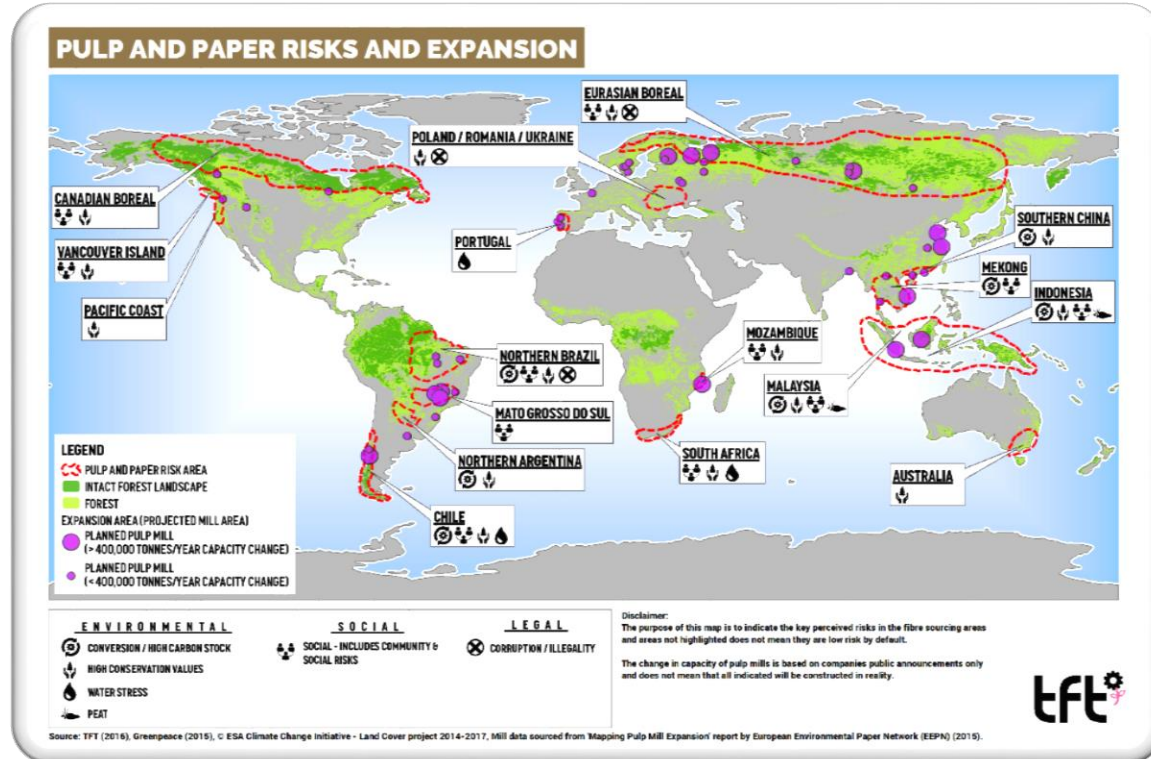
*Make change.* We engage across the supply chain to make policy commitments a reality in the field. We mediate to find practical ways forward.

产生变化。我们使供应链参与其中，以把政策承诺变成在现场的现实。我们通过斡旋以找到实际的前进道路。



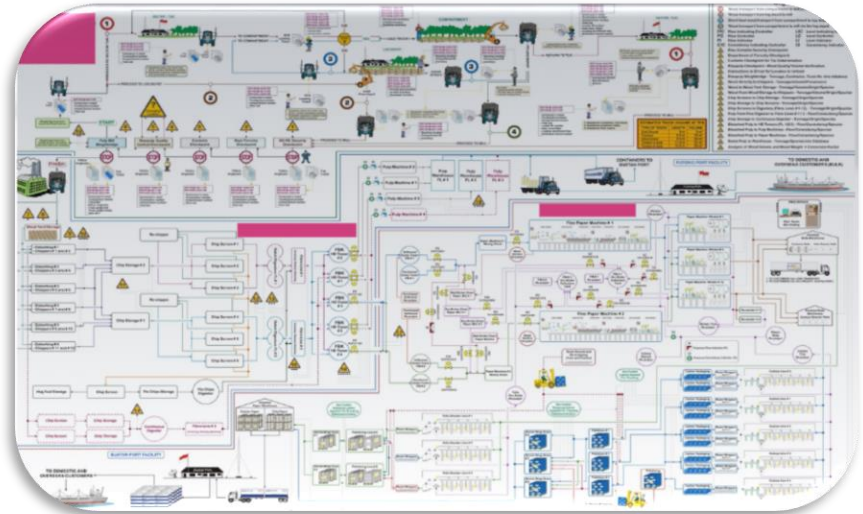
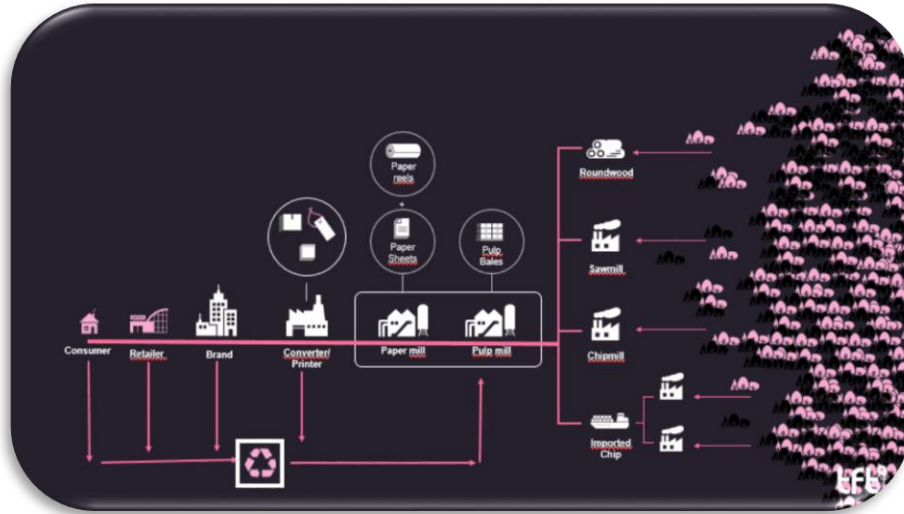
# WHERE DO WE SEE THE ISSUES AROUND THE WORLD?

## 我们在世界上的哪些地方可以看见问题？



# MAKING SENSE OF COMPLEXITY

## 理解复杂性



Map your supply chain and implement process flows. Link to challenges and transform practices.  
描绘你的供应链和实施程序流程。连接挑战以及改革实践。



**BE INFORMED BY REALITY. TACKLE THE BIG CHALLENGES!**

**了解实际情况，处理重大挑战！**

---







# STARLING

---

*VERIFY YOUR FOREST IMPACT*  
*验证企业对森林的影响*

---

# 5m ha

*of forest were destroyed every year  
between 1990 and 2015\**  
1990年至2015年间平均年毁林

# 71%

*of all tropical deforestation between 2000 and 2012  
was caused by commercial agriculture\*\**  
2000年至2012年间因商业农业引起的热带森林毁林

# 10%

*of greenhouse gas emissions are linked to deforestation  
(equivalent of 600m cars emissions)\*\*\**  
因毁林产生的温室气体排放  
(相当于6亿辆汽车排放总量)

# 760

*No-Deforestation commodity  
commitments have been identified in  
2017\**  
2017年承诺零毁林的商品类型

# KEY CHALLENGES TO ADDRESS

## 亟待应对的挑战

---

1

**Show Achievement  
of No Deforestation  
Commitment**

展现零毁林政策承诺的  
实施成果

2

**Proactively Manage  
Deforestation in the  
supply chain**

积极应对供应链中的  
毁林行为

3

**Measure Impact of  
Transformation  
Strategies**

衡量企业零毁林策略  
的影响





# STARLING

*a service enabling companies to verify how they are implementing their No-Deforestation commitments*

*一个帮助企业衡量与验证零毁林承诺实施情况的工具*

**1**  
Evidence-based  
以证据为基础

**2**  
Private and independent  
私人与独立

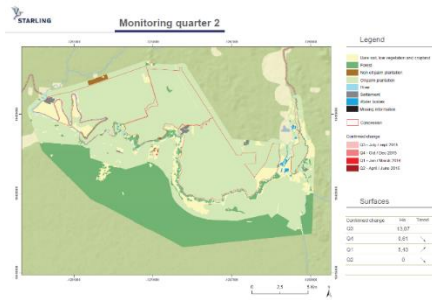
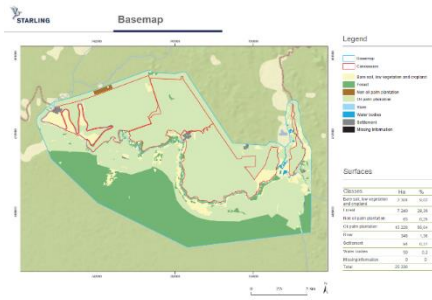
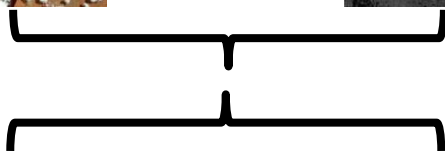
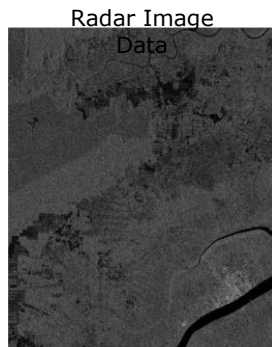
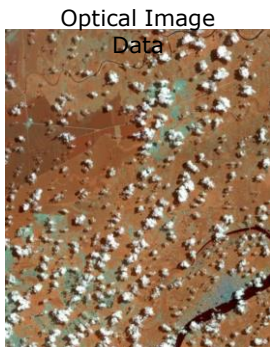
**3**  
Reliable and global  
可靠与全球化

# COMBINING TECHNOLOGIES

## 技术的集成



# AIRBUS



- **High resolution (1.5m) optical data**
- **高分辨率 (1.5米) 光学数据**
- **High Temporal resolution possible**
- **best currently is every 12 days**
- **高时间分辨率 - 目前最好是每12天**
- **Detect forest loss (not tree cover loss) and forest degradation**
- **检测森林损失 (而不是树木损失) 和森林退化**

Want to know more? 了解更多  
<http://www.starling-verification.com/>



# STARLING

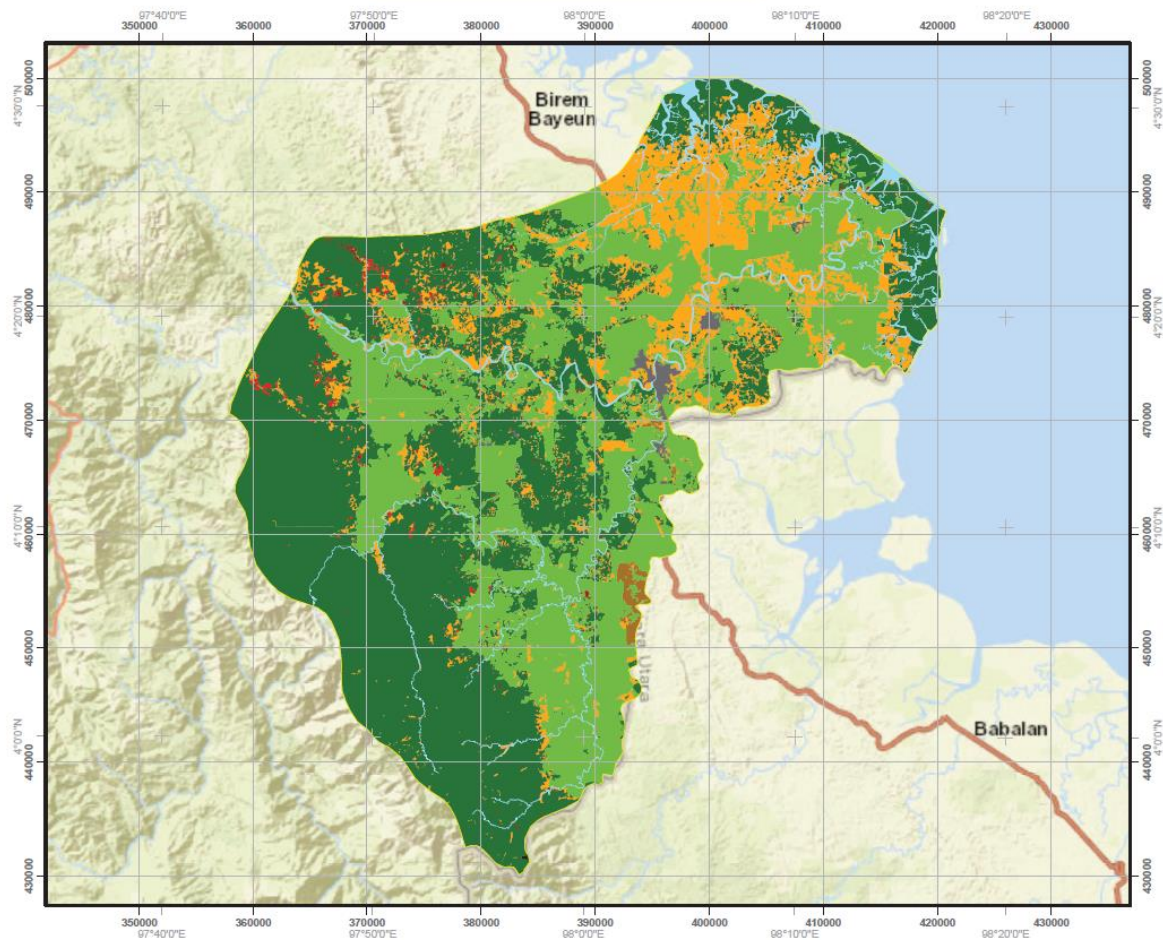
**Monitoring report – Q2 2016**

AC-22-16-01

**ACEH Tamiang – Indonesia**







Legend

- Estate
- Bare soil, low vegetation and cropland
- Forest
- Other plantation
- Oil-palm plantation
- River
- Settlement
- Water body
- Missing information

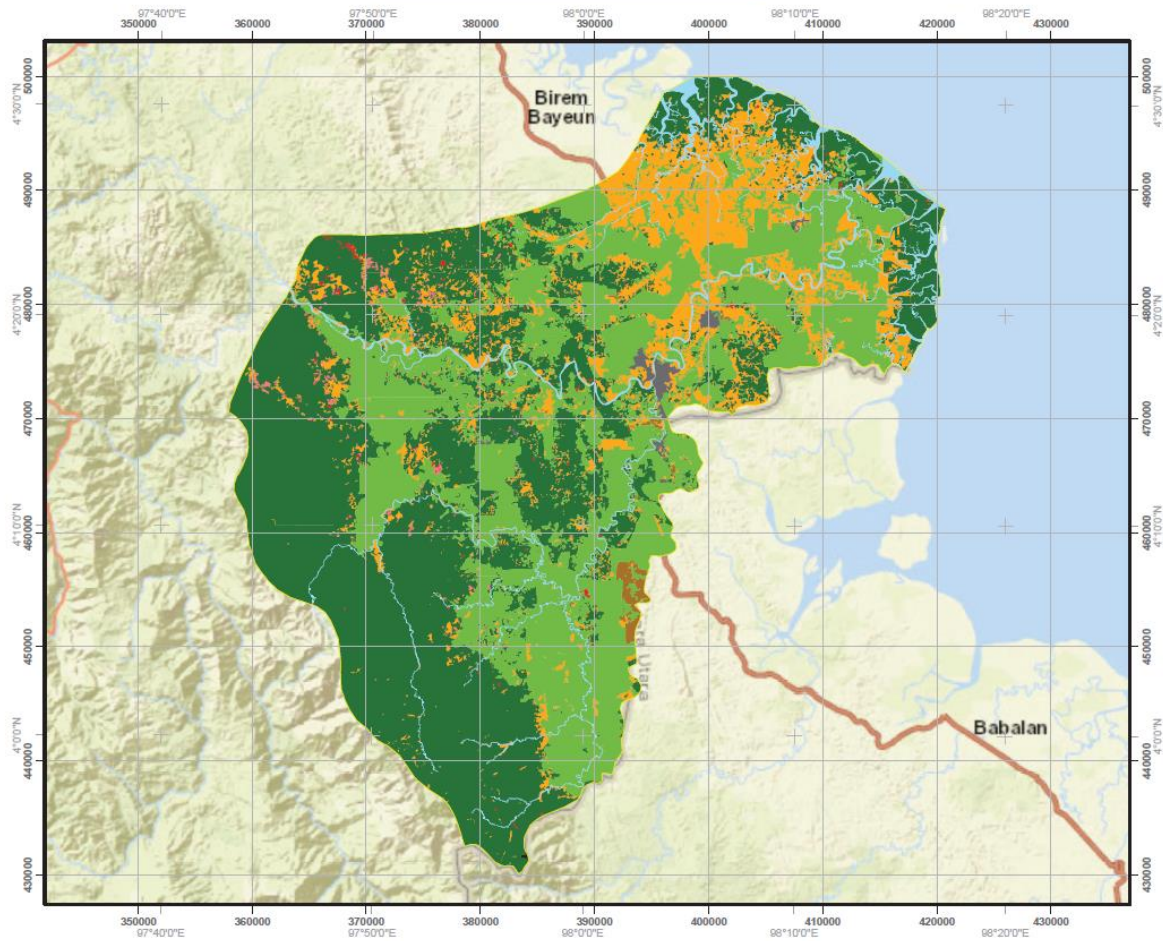
Forest cover change

- Q2 2016
- Q3 2016

Key Figures

	Ha	Trend
Q2 2016	580	●
Q3 2016	295	●
Mean/Quarter	437	





Legend

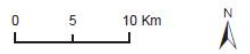
- Estate
- Bare soil, low vegetation and cropland
- Forest
- Other plantation
- Oil-palm plantation
- River
- Settlement
- Water body
- Missing information

Forest cover change

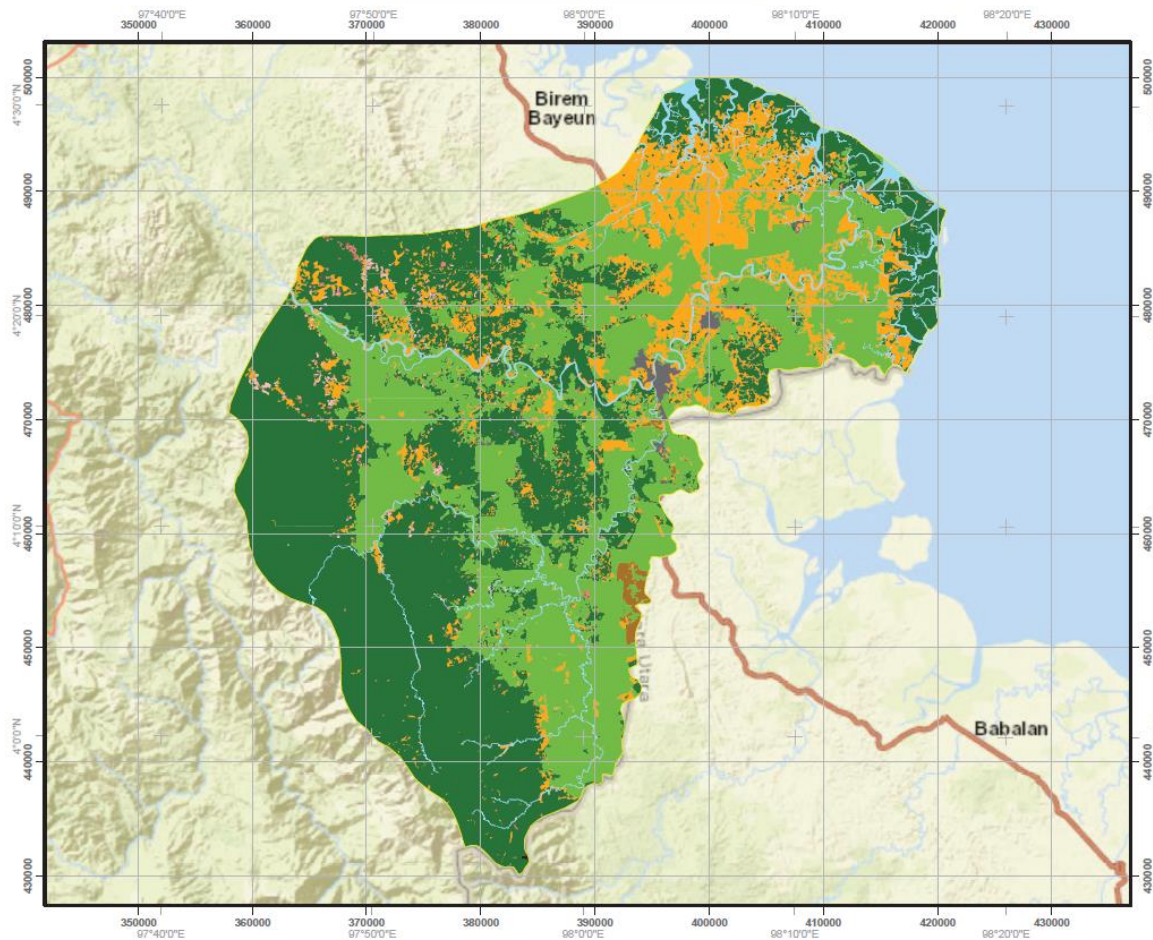
- Q2 2016
- Q3 2016
- Q4 2016

Key Figures

	Ha	Trend
Q2 2016	580	●
Q3 2016	295	●
Q4 2016	5	●
Mean/Quarter	293	







Legend

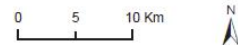
- Estate
- Bare soil, low vegetation and cropland
- Forest
- Other plantation
- Oil-palm plantation
- River
- Settlement
- Water body
- Missing information

Forest cover change

- Q2 2016
- Q3 2016
- Q4 2016
- Q1 2017

Key Figures

	Ha	Trend
Q2 2016	580	●
Q3 2016	295	●
Q4 2016	5	●
Q1 2017	9	●
Mean/Quarter	222	





# SUMMARY

## 总结

---

**1**  
**Verify commitments, guide decisions**  
验证承诺 指导决策

**2**  
**Achieve transparency goals**  
实现透明性

**3**  
**Mitigate reputational risk**  
降低声誉风险

**4**  
**Get preferential treatment on the market**  
赢得市场竞争力

**5**  
**Create trust along the supply chain**  
建立供应链间的信任

# THANK YOU

*Transforming supply chains for  
people and nature.*

[www.tft-earth.org](http://www.tft-earth.org)

